

## CAVITY OPTIONS

MG100 Patent 55148

MG100 comes in two standard thickness 18mm and 33mm,

18mm for the standard 20mm cavity  
 33mm for the standard 35mm cavity  
 2 x 18mm for 40mm and larger cavities

## HOW TO APPLY

MG100 - thickness - hole size - Straight or Angled

Example:  
 MG100-18-80 would be for a 20mm cavity with a 80mm diameter pipe penetration

## HOW TO PURCHASE

MG100 flashings are supplied individually with the desired pre-cut shape with butyl adhesive tape ready for installation.

Applicator to provide:

- Cavity size.
- Exact shape and size of the Penetration.
- Angle or Angles if it's a compound penetration.

Available from Vanluk Design or your local stockist.

## DEVELOPMENTS

ANGLE CUTS - Our CNC Robot will cut most profiles to an angle or compound angle. Each of these are custom made and not every shape and angle can be produced.

SCUTCHEON PLATES - For thin claddings to increase thickness to achieve a compliant weather seal. Generally 1:1 ratio. Various materials and finishes available. Custom made for specific applications.

Please contact us for your unique requirements.

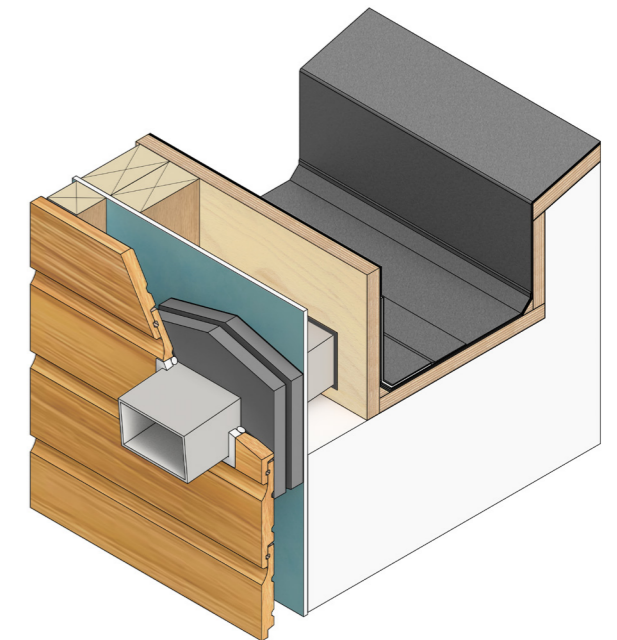
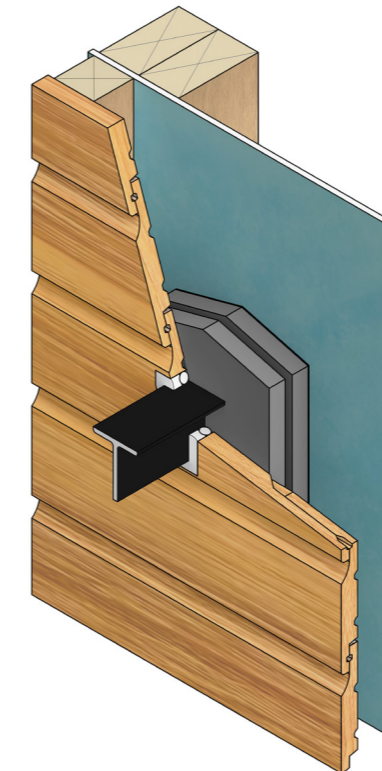
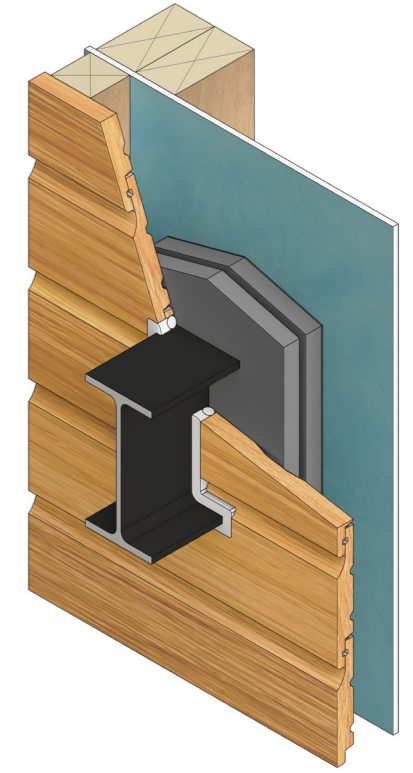
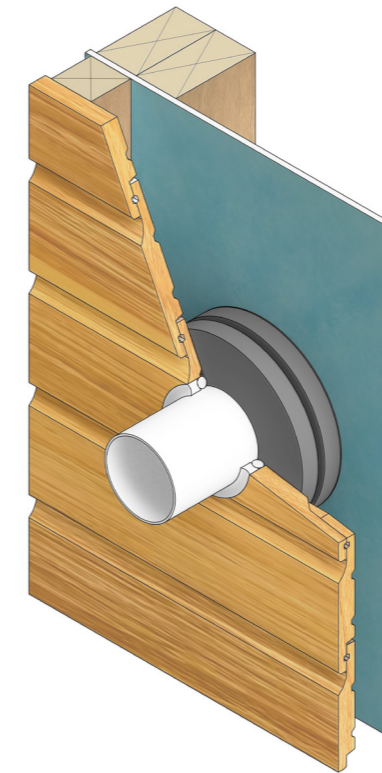
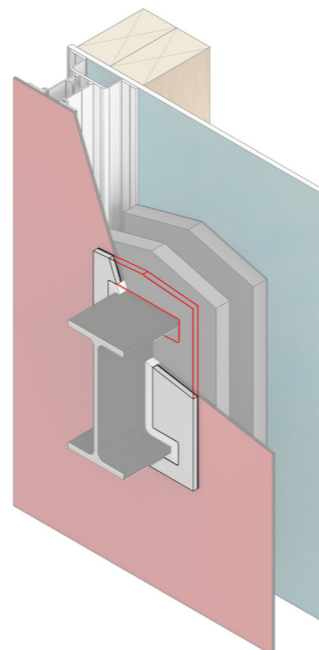
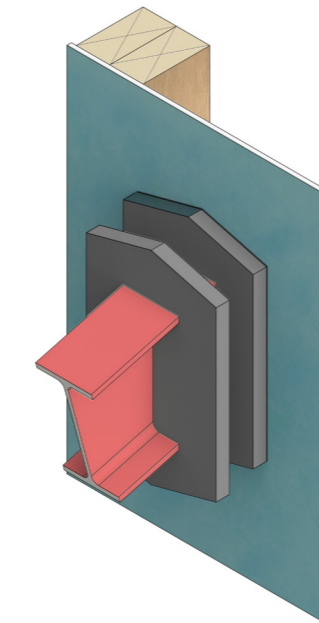
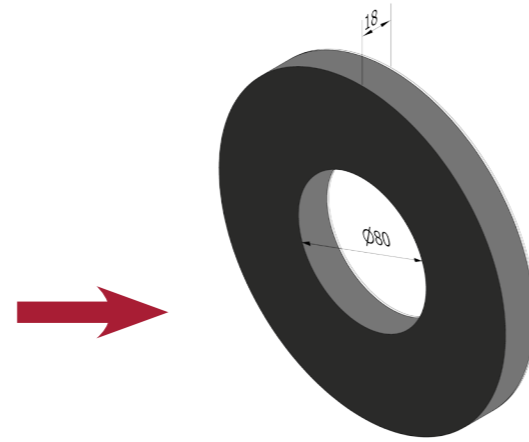
## COMMON EXPAMPLES

| TYPE       | SIZE  | 18mm Thickness | 33mm Thickness |
|------------|-------|----------------|----------------|
| Pipes      | 70mm  | MG100-18-70    | MG100-33-70    |
| Pipes      | 75mm  | MG100-18-75    | MG100-33-75    |
| Down Pipes | 80mm  | MG100-18-80    | MG100-33-80    |
| Down Pipes | 90mm  | MG100-18-90    | MG100-33-90    |
| Waste & SW | DN100 | MG100-18-110   | MG100-33-110   |
| Waste & SW | DN150 | MG100-18-110   | MG100-18-110   |
| Waste & SW |       | MG100-18-110   | MG100-18-110   |

**VANLUK DESIGN LIMITED**  
 4C Winston Place  
 Henderson  
 Auckland 0610  
 New Zealand

**PO Box 80105**  
 Green Bay  
 Auckland 0643  
 New Zealand

**info@vanluk.co.nz**  
 Office +64 9 280 4422  
 John +64 21 772 800  
 Felipe +64 210 827 2885  
 Mark +64 22 043 0273



Pipe / Penetration Cavity Flashing System

**MG100**

Patent 554148



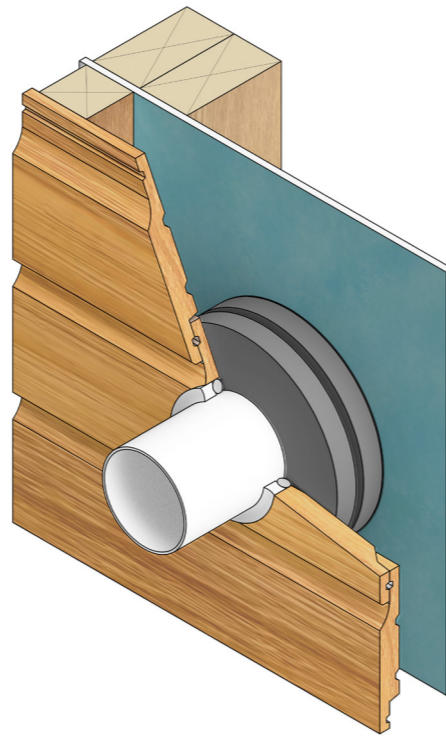
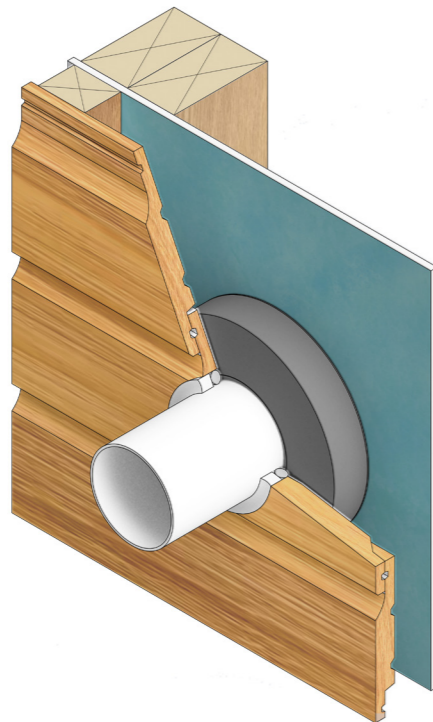
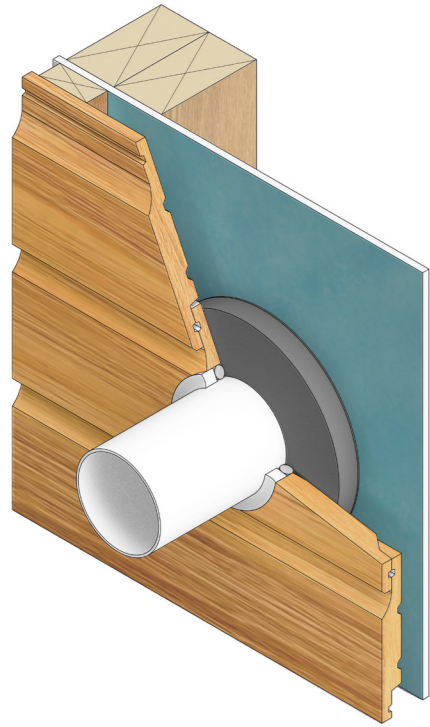
# MG100

## CAVITY OPTIONS

For 20mm cavity  
Application of 1 x MG100-18-XX

For 35mm cavity  
Application of 1 x MG100-33-XX

For 40mm and larger cavities  
Application of 2 x MG100-18-XX



## MG100 Typical Installation procedure

### PREPARATION

**1**

Cut a neat hole in the Air Barrier.

Secure pipe to appropriate support fixture.

Clean all dust and debris from surrounding area. Prime if necessary.

**2**

Peel off protective film.

**3**

Stick MG100 Cavity flashing to Air barrier. Press MG100 firmly to ensure adhesion.

### For 20 and 35mm Cavities

**4a**

Profile cladding to penetration shape, allow all around clearance to apply sealant in accordance with sealant manufacturer's recommendations. Generally 1:1 ratio

**5a**

Mask and Apply Sealant in accordance with sealant manufacturer's recommendations.

A systemised weather-tight seal complimenting a modern cavity design.

NOTE: 'Air Barrier' refers to RAB or Building Wrap

PEF Rod required for thicker claddings.

### For LARGER Cavities

**4b**

Second MG100 **do not** peel off protective film.

Fit second MG100 as a friction seal in line with the back of the cladding.

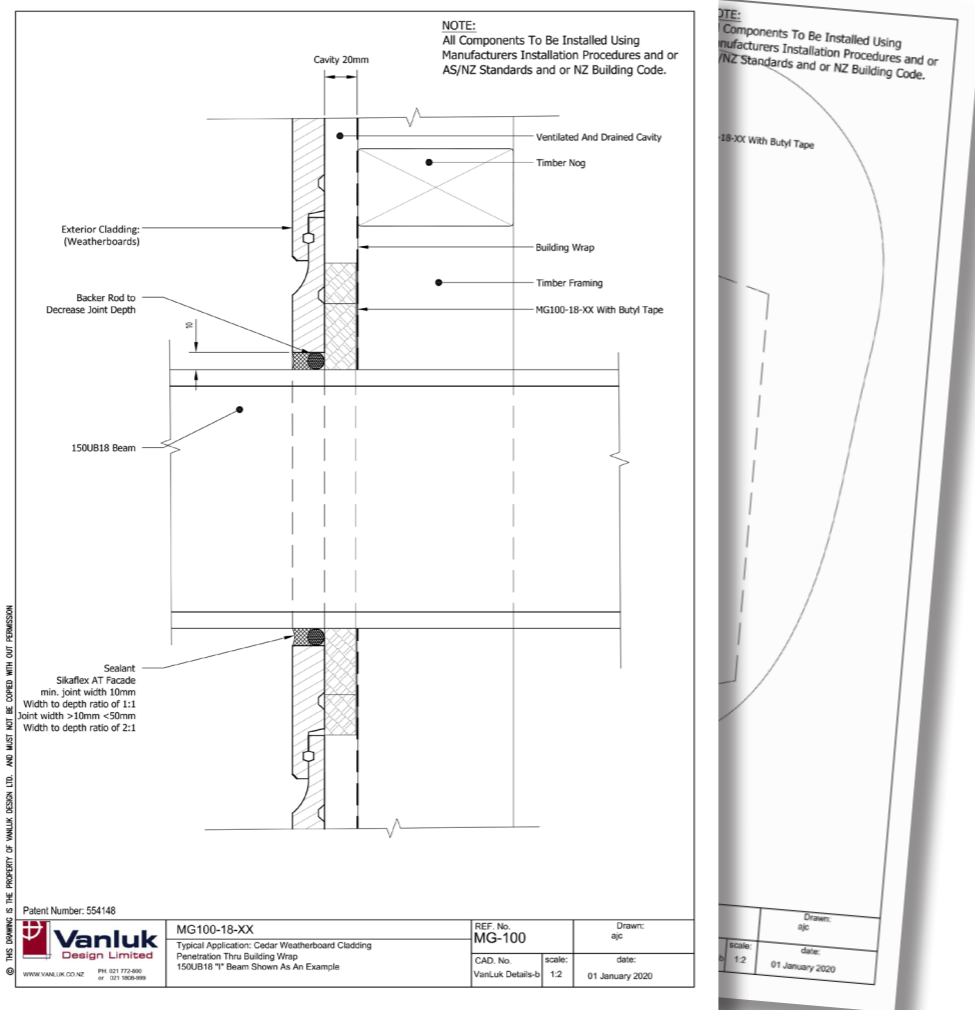
**5b**

Profile cladding to penetration shape, allow all around clearance to apply sealant in accordance with sealant manufacturer's recommendations. Generally 1:1 ratio

**6b**

Mask and Apply Sealant in accordance with sealant manufacturer's recommendations.

A systemised weather-tight seal complimenting a modern cavity design.



A full range of technical drawings are available on our website:  
[www.vanluk.co.nz](http://www.vanluk.co.nz)

## MG100 Cavity Flashing System

Introducing the MG100 Cavity Flashing System: The Ultimate Weather Tightness solution for Cavity Penetrations.

Say goodbye to traditional methods of air sealing cavity penetrations dressed with butyl tape. The MG100 revolutionizes the way you maintain the integrity of the air seal, whether it's on RAB or building wrap. The MG100 provides a bond breaker surface behind the weather seal around the penetration.

Engineered to provide an unmatched air seal in a systemised repeatable method, ensuring optimal performance in achieving weather tightness.

The MG100 is made from die cut closed cell foam for a more rigid seal, specially around larger penetrations.

Key Benefits:

- **Versatile Application:** Compatible with a wide range of substrates, including RAB and Building wrap.

The most effective flashing solution for pipes and other penetrations. Easy to install, flexible and suitable for all diameters and shapes.

- **Sealant Backing:** Unlike alternatives, The MG100 Cavity Flashing system provides a reliable backing for the weather seal.

- **Easy Peel and Stick:** Featuring an effortless peel-and-stick design, the MG100 ensures quick and hassle-free installation, saving valuable time on the job site.

- **Precision Fit:** Each MG100 is die-cut or CNC machined to precisely fit your specific application, ensuring seamless installation every time.

- **Shapes Beyond Pipes:** While other products in the market are limited to pipe applications, the MG100 accommodates any penetration shape.

- **Angle Cuts:** The MG100 can accommodate angled penetrations coming through a facade, even compound angles.