

## SPECIFICATIONS

MG100® Patent 554148 approved in New Zealand

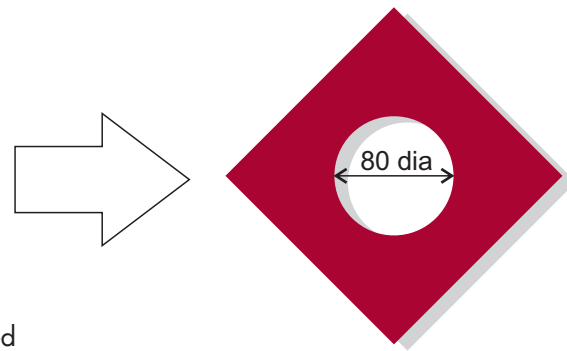
MG100® comes in two standard thicknesses 18mm and 33mm,

18mm for the standard 20mm cavity  
33mm for the standard 35mm cavity  
2x18mm for 35mm to 65mm cavities  
2x33mm for 65mm and larger cavities

## HOW TO APPLY

MG100 - **thickness** - **hole size** - **Straight or Angled**,

Example:  
MG100-18-80 would be for a 20mm cavity with a 80mm diameter pipe penetration.



## HOW TO PURCHASE

The MG100 flashing are supplied individually with the desired pre-cut hole with butyl adhesive tape ready for installation.

Available from Vanluk Design or your local stockist.

## DEVELOPMENTS

ANGLE CUTS - The latest development for the MG100.

Our CNC Robot will cut most profiles to an angle or compound angle. Each of these are bespoke and not every shape and angle can be produced.

Please contact us for your unique requirements.

## COMMON EXAMPLES

TYPE	SIZE	18mm THICKNESS	33mm THICKNESS
Pipes	70mm	MG100-18-70	MG100-33-70
Pipes	75mm	MG100-18-75	MG100-33-75
Down Pipes	80mm	MG100-18-80	MG100-33-80
Down Pipes	90mm	MG100-18-90	MG100-33-90
Waste & SW	DN100	MG100-18-110	MG100-33-110
Waste & SW	DN150	MG100-18-160	MG100-33-160
Waste & SW	DN225	MG100-18-250	MG100-33-250



**Pipe / Penetration Cavity Flashing System**

# MG100

Vanluk Design Limited  
Unit 1/15 Paramount Drive  
Henderson  
Auckland 0610  
New Zealand

PO Box 77 046  
Mt. Albert  
Auckland 1350  
New Zealand

E-mail: [info@vanluk.co.nz](mailto:info@vanluk.co.nz)  
Phone: office +64 9 280 44 22  
John +64 21 772 800  
Alex +64 211 808 999



# MG100

## CAVITY OPTIONS

For 20mm cavity application of 1 x MG100-18-XX



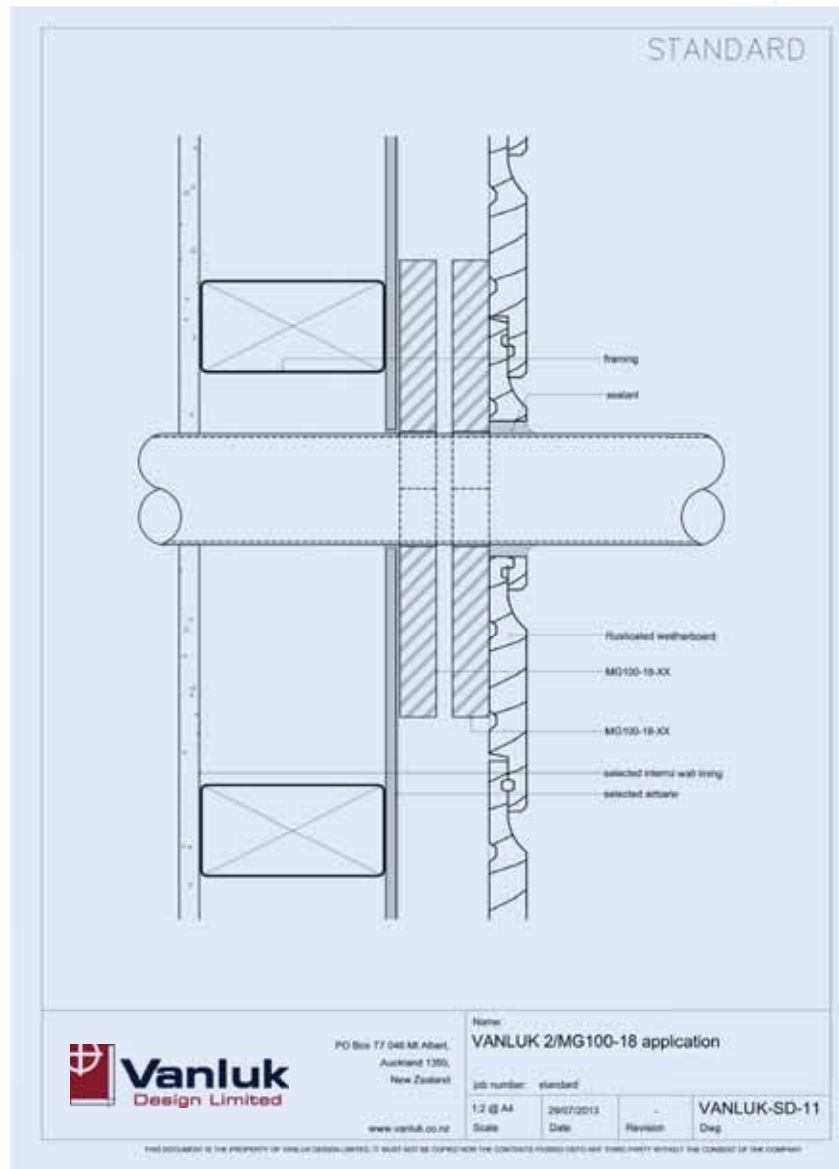
For 35mm cavity application of 1 x MG100-33-XX



For 35mm to 65mm cavities application of 2 x MG100-18-XX



For 65mm and larger cavities application of 2 x MG100-33-XX



All full range of technical drawings are available on our website: [www.vanluk.co.nz](http://www.vanluk.co.nz)

## MG100 Typical Installation procedure

### PREPARATION

**1** Cut a neat hole in the Air Barrier.  
Remove protective paper from one side of the Butyl tape and apply to MG100.  
Secure pipe to appropriate support fixture.

**2** The hole in Air Barrier should be large enough to be able to apply a sealant in accordance with the sealant manufacturer's recommendations.

**3** Clean and or prime the Air Barrier surface. Remove protective paper from the remaining side of the butyl tape and apply to MG100.  
Secure MG100 to Air barrier.

### For 20 and 35mm Cavities

**4a** The hole in the cladding should be large enough to be able to apply a sealant in accordance with the sealant manufacturer's recommendation.

**5a** A weather tight seal complimenting a modern cavity design.

NOTE: 'Air Barrier' refers to RAB or Building Wrap

### For LARGER Cavities

**4b** Place a second MG100 in line with the back edge of the cladding line.

**5b** The hole in the cladding should be large enough to be able to apply a sealant in accordance with the sealant manufacturer's recommendation.

**6b** A weather tight seal complimenting a modern cavity design.

## MG100 pipe and Cable Cavity Flashing

Introducing the MG100® for penetrations of 50mm diameter and above.

The MG100 maintains the airseal whether it is used on an RAB or building wrap and provides a bond breaker for the sealant around the penetration.

Penetrations have traditionally been sealed to the airseal by butyl tape dressed around the penetration. This task is highly dependent upon the skill of the operator, not allowing for

accidental or intentional movement of the penetration and does not provide a low energy bond break for the weatherseal between the sheet and penetration.

**The most effective flashing solution for pipes and other penetrations. Easy to install, flexible and suitable for all diameters and shapes of pipe / penetrations.**

The MG100® is made from die cut closed cell foam for a more rigid seal around larger penetrations.

The integrity of maintaining the air seal so critical to modern cavity design is achieved with ease. A systemised, repeatable method of construction, without undue reliance on an individuals skill level.

Pre fitted matching die cut double sided Butyl Tape is provided with every MG100® and enables a fast close in to be achieved.

All MG100® are die cut or CNC and machined to precisely fit your application.